

TRANSFENNICA



The history of Transfennica 1976-2025

- **1976** - Transfennica was established by Finnpap, Finnboard, Finncell and Converta.
- **1994** - Change of company form.
 - Finnpap and Finnboard sold their shares to UPM, Metsä-Serla, Myllykoski and Metsä-Botnia
- **1996** - Subsidiaries were established in Belgium, Germany and the U.K.
- **1999** - Established a branch office in Hamina.
- **2001** - A new subsidiary in Paldiski was established.
- **2002** - Spliethoff acquired 51 % of Transfennica shares.
- **2004** - Spliethoff ordered six multi-purpose Con-Ro newbuildings to enter Transfennica's trade.
- **2005** - Spliethoff further increased the order by two multi-purpose Con-Ro newbuildings.
 - Spliethoff acquired the remainder of the Transfennica shares.
 - A new shipping service to Gdynia was inaugurated and a new subsidiary was established.
- **2006** - New shipping services to Husum, Gdynia, Rostock and Lübeck were inaugurated.
 - A new shipping service to St. Petersburg was inaugurated and new subsidiary was established.
 - The first two newbuildings in a series of eight vessels, M/s Timca and M/s Kraftca were delivered.
- **2007** - Offices were established in Amsterdam, Bilbao and Zeebrugge.
 - A new shipping line between Zeebrugge and Bilbao was inaugurated in September.
 - We took delivery of the third and the fourth Con-Ro newbuildings, M/s Genca and M/s Trica.

cont..

The history of Transfennica 1976-2025

- **2008** - Amsterdam became the head office of Transfennica Group.
 - The fifth Con-Ro newbuilding M/s Pulpca was delivered and deployed in our Antwerp trade.
- **2009** - The last Con-Ro, M/s Plyca, was delivered in June to sail on the Hanko-Lübeck route.
- **2010** - Inauguration of a new dedicated terminal A3 in Bilbao, fully operated and controlled by Transfennica.
- **2011** - The Iberia operations were moved to PSA's Wielingendok with 2 multipurpose Ro-Ro berths and a deep-sea container terminal as well as warehouse services.
- **2012** - Shipping services and Transfennica office were moved from Hamina to Kotka.
 - Exhaust gas cleaning system "scrubber" was installed on M/s Plyca.
 - The Iberia operations moved from PSA's Wielingendok to P&O Ferries, offering our customers excellent connections to Tilbury, Hull and Teesport.
- **2013** - It was decided to install exhaust gas cleaning systems "scrubbers" on the other five Con-Ro's.
 - Due to increasing demand in the Russian market, our shipping service has been upgraded with two direct sailings per week from Tilbury and Antwerp to St Petersburg.
- **2014** - Scrubbers were retrofitted in 5 Spliethoff Con-Ro's during 2014.
 - Iberia shipping services were terminated.
- **2015** - It was decided to start a new shipping service from Kotka to Rostock and v.v. in January 2016.
- **2016** - The new SOLAS-regulation for declaring Verified Gross Mass (VGM) of containers came into force 1.7.2016.

cont..

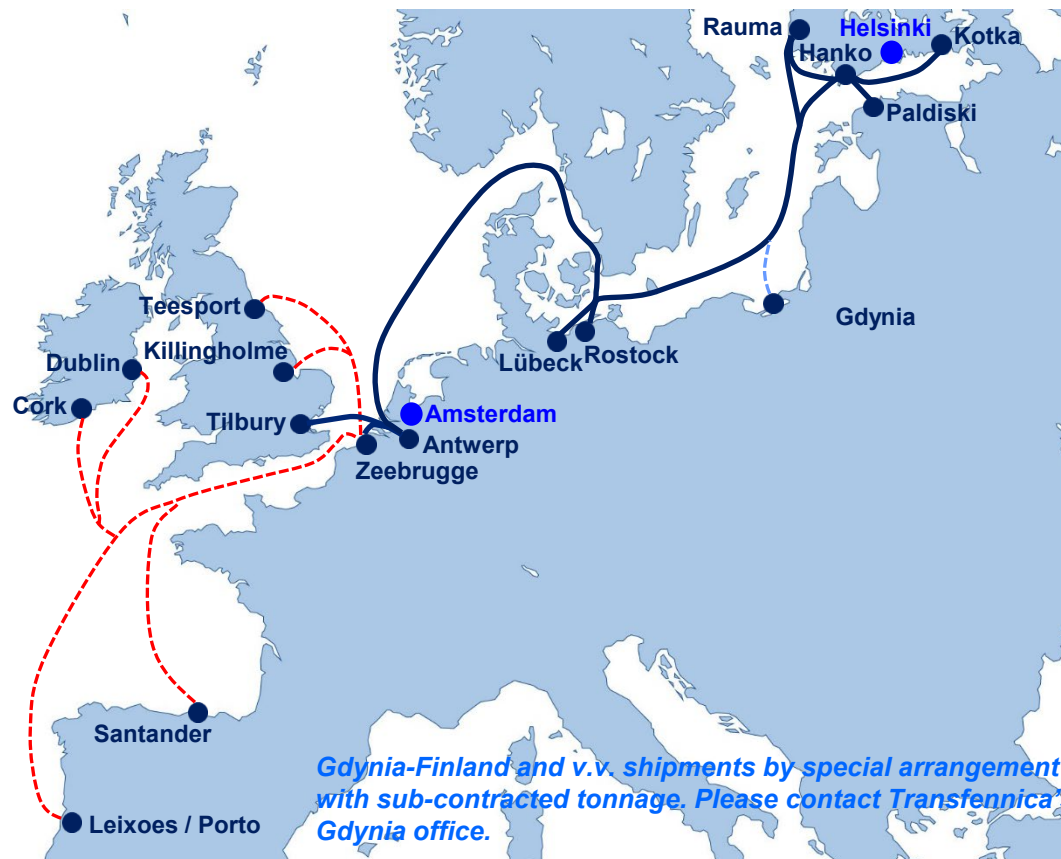
The history of Transfennica 1976-2025


- **2020** - 80' roll trailers were introduced in our service with a loading capacity of max. 80 tons. The platforms are equipped with rails to handle trains, locomotives and railcars.
 - Brexit (UK's separation from EU). Transition period continued until end of 2020.
 - EORI-number (Economic Operators Registration and Identification number) was requested for any business or individual established in the EU which undertake the import and export of goods into and out of the EU.
- **2021** - In September Transfennica's Helsinki office moved to newly renovated office premises at Uudenmaankatu after 41 years in Eteläranta.
 - Our shipping service between Hanko and Gdynia was terminated at the end of 2021, but the shipments continue with sub-contracted tonnage offering our customers sailings to selected ports in our network.
- **2022** - Due to the Ukrainian war, we suspended all cargo and vessel operations to and from St. Petersburg in March.
- **2023** - As the Ukrainian war continued, we were forced to close our St. Petersburg office in the end of April.
 - M/v Seagard was sold to Smyril Line in Faroe Islands after being chartered by us for 24 years.
- **2024** - Transfennica and CLdN connected their shipping services in Zeebrugge to provide their customers with broader connections through Northern and Western Europe.

Transfennica in Brief

- **In 2025 we carried about 4 million tonnes of cargo**
- **A staff of about 100 persons**
- **Operating a fleet of about 9 modern Ro-Ro vessels ice-strengthened to ice class 1A or 1A Super**
- **100 % managed by Dutch Spliethoff**
- **Head office in Amsterdam and offices in Belgium, Estonia, Finland, Germany, Poland and the U.K.**

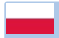
Contact details and sailing routes effective in 2026





Transfennica Ltd, Helsinki
 Tel. +358 9 132 62
info.general@transfennica.com


Transfennica Ltd, Kotka
 Tel. +358 9 132 6327
info.kotka@transfennica.com


Transfennica Oü
 Tel. +372 6 318 870
info.paldiski@transfennica.com


Transfennica Polska Sp. z o.o.
 Tel. +48 58 660 1260
 Fax. +48 58 660 1266
info.poland@transfennica.com


Transfennica Deutschland GmbH
 Tel. +49 451 484 850
info.germany@transfennica.com


Transfennica (UK) Ltd
 Tel. +44 1375 363 900
info.uk@transfennica.com

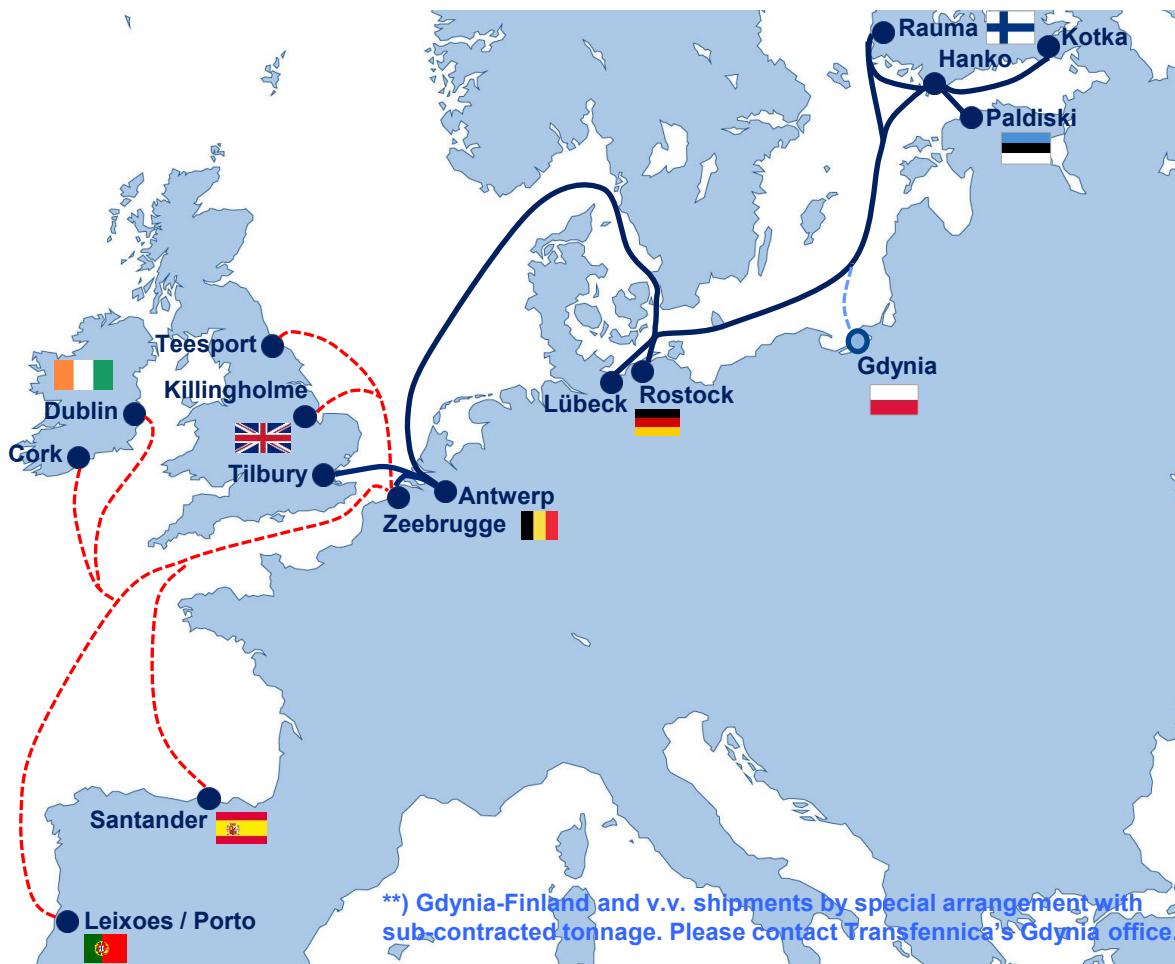

Transfennica Belgium B.V.B.A.
 Tel. +32 3 570 9292
info.belgium@transfennica.com


Head office:
Transfennica Nederland B.V.
 Tel. +31 20 44 87 600
 Fax. +31 20 44 87 666
amsterdam@transfennica.com

TRANSFENNICA

Transfennica's Shipping Services in 2026

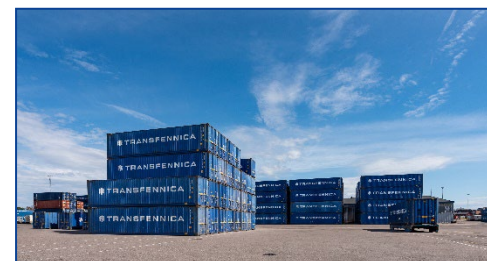
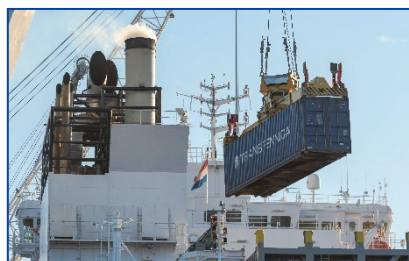
TILBURY	
Antwerp	1/7
Gdynia	1/7
Hanko	1/7
Kotka	1/7
Paldiski	1/7
Rauma	1/7
ZEEBRUGGE	
Hanko	1/14
Kotka	1/14
Paldiski	1/14
Rauma	1/14
ANTWERP	
Gdynia	2/7
Gdynia *)	3/7
Hanko	2/7
Hanko *)	3/7
Kotka	1/7
Kotka *)	2/7
Lübeck	1/7
Paldiski	2/7
Paldiski *)	3/7
Rauma	1/7
Tilbury	1/14
LÜBECK	
Hanko	7/7
Kotka	2/7
Paldiski	3/7
Rauma	1/7
Rauma *)	2/7
ROSTOCK	
Hanko	1/7
*) fortnightly	



RAUMA	
Antwerp	1/7
Lübeck	1/14
Tilbury	1/7
Zeebrugge	1/14
HANKO	
Antwerp	2/7
Antwerp *)	3/7
Lübeck	6/7
Paldiski	3/7
Rostock	1/7
Tilbury	1/7
Zeebrugge	1/14
KOTKA	
Antwerp	1/7
Lübeck	2/7
Rostock	1/7
Tilbury	1/7
Zeebrugge	1/14
PALDISKI	
Antwerp	2/7
Gdynia	2/7
Hanko	3/7
Lübeck	3/7
Tilbury	1/7
Zeebrugge	1/14
FINLAND	
Gdynia	**)
GDYNIA	
Antwerp	1/7
Antwerp *)	2/7
Finland	**)
Paldiski	3/7
Tilbury	1/7
*) fortnightly	

Transfennica's containers' dimensions

	20' Containers	40' Containers	45' Containers
Outside length	6 058 mm	12 192 mm	13 716 mm
Outside width	2 500 mm	2 500 mm	2 500 mm
Outside height	2 896 mm	2 896 mm	2 895 mm
Inside length	5 914 mm	12 100 mm	13 556 mm
Inside width	2 442 mm	2 442 mm	2 444 mm
Inside height	2 685 mm	2 685 mm	2 695 mm
Door opening width	2 442 mm	2 442 mm	2 416 mm
Door opening height	2 578 mm	2 575 mm	2 585 mm
Tare weight	2 800 kg	4 320 kg	4 660 kg
Max. payload	27 680 kg	29 850 kg	29 740 kg
Max. gross weight	30 480 kg	35 000 kg	34 000 kg
Inside space	38,6 cbm	79,1 cbm	90,0 cbm



Cassette dimensions

Length	12,0 metres
Width	2,5 metres
Height	0,85 metres
Payload	60-80 tons



Rolltrailer dimensions

	Payload	Length	Width	Height
20' RT	25 t	6,0 m	2,5 m	58 cm
20' LT	40 t	6,0 m (6,93 m)	2,5 m	50 cm
30' RT	60 t	9,0 m	2,5 m	70 cm
40' RT	80 t	12,0 m	2,5 m	73 cm
40' RT	100 t	12,0 m	2,5 m	73 cm
40' RT	120 t	12,0 m	2,5 m	84 cm
60'-62' RT	80-100 t	18,5-19,3 m	2,5 m	85 cm
80' RT	80 t	24,6 m	2,7 m	106 cm



Deck heights and cargo weights

VESSELS

Maximum main deck height:

- | | |
|--|--------------|
| • Hanko-Lübeck/Paldiski | 5,5-8,0 m |
| • Kotka/Hanko-Rostock/Lübeck | 5,5-8,0 m |
| • Kotka/Hanko/Rauma-Antwerp/Zeebrugge | 8,0 m |
| • Kotka-Lübeck (via Hanko) | 5,5-8,0 m |
| • Rauma-Antwerp/Tilbury/Zeebrugge | 8,0 m |
| • <i>Gdynia (sub-contracted service)</i> | <i>5,2 m</i> |

Maximum cargo weight on cassette or roll-trailer:

- | | |
|--|-------------|
| • Hanko-Lübeck/Paldiski | 120 t |
| • Kotka/Hanko/Rauma-Antwerp/Zeebrugge | 120 t |
| • Rostock/Antwerp/Zeebrugge-Hanko | 90 t |
| • Rostock/Lübeck-Hanko | 90 t |
| • Kotka/Hanko/Rauma-Tilbury | 80 t |
| • <i>Gdynia (sub-contracted service)</i> | <i>70 t</i> |

Lo-Lo project cargoes on weather deck:

- Only Kotka/Hanko/Rauma-Antwerp
- Kotka-Lübeck

EQUIPMENT

Cassettes:

- 40' payload 60 and 80 t height 85 cm

Roll-trailers:

- 20' payload 25 t height 58 cm
- 20' payload 40 t height 50 cm
- 30' payload 60 t height 70 cm
- 40' payload 80 t height 73 cm
- 40' payload 100 t height 73 cm
- 40' payload 120 t height 84 cm
- 60'+ 62' payload 80-100 t height 85 cm
- 80' payload 80 t height 106 cm

Containers:

- All high-cube pallet-wide 20', 40' and 45'

Type of cargo; Reefer trailers



Type of cargo; Oversized cargo



Type of cargo; Tank trailers

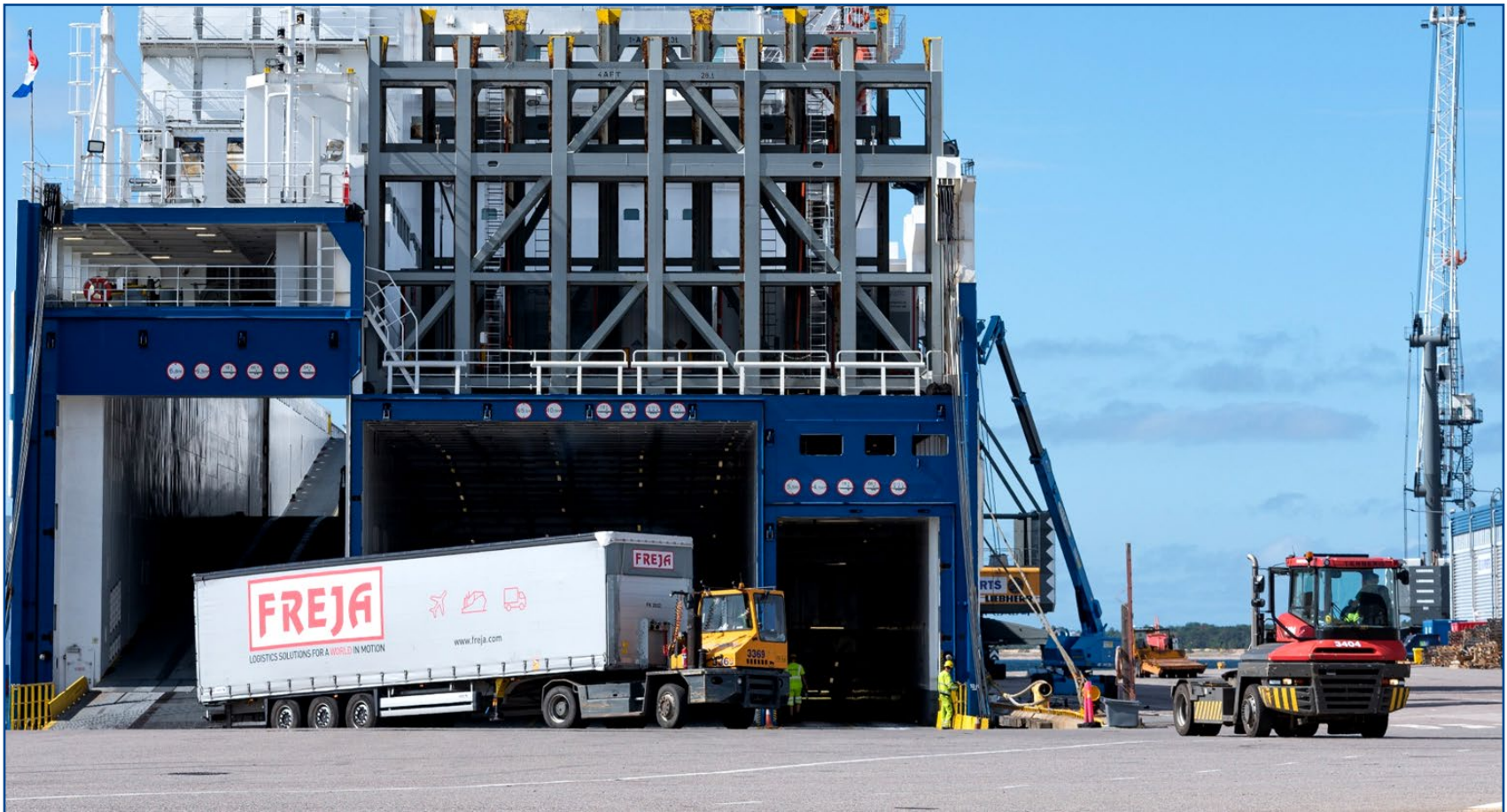


Type of cargo; Tank containers



TRANSFENNICA

Type of cargo; Trailers



TRANSFENNICA

Type of cargo; Containers



Type of cargo; Heavy machinery



TRANSFENNICA

Type of cargo; Paper reels RoRo



Type of cargo; Paper reels StoRo



Transfennica's fleet in 2026



2011: m/s Bore Sea
DWT 13 535

m/s Bore Song
DWT 12 200



2009: m/s Plyca
2008: m/s Pulpca
2007: m/s Genca
2006: m/s Kraftca
m/s Timca

DWT 17 400



2008: m/s Corona Sea
DWT 11 702

TRANSFENNICA

M/s Bore Sea & M/s Bore Song



TRANSFENNICA

M/s Plyca, M/s Pulpca, M/s Genca, M/s Kraftca & M/s Timca



TRANSFENNICA

M/s Corona Sea



TRANSFENNICA

*** Thank you for your attention ***



We look forward to booking your cargo on board our versatile vessels!